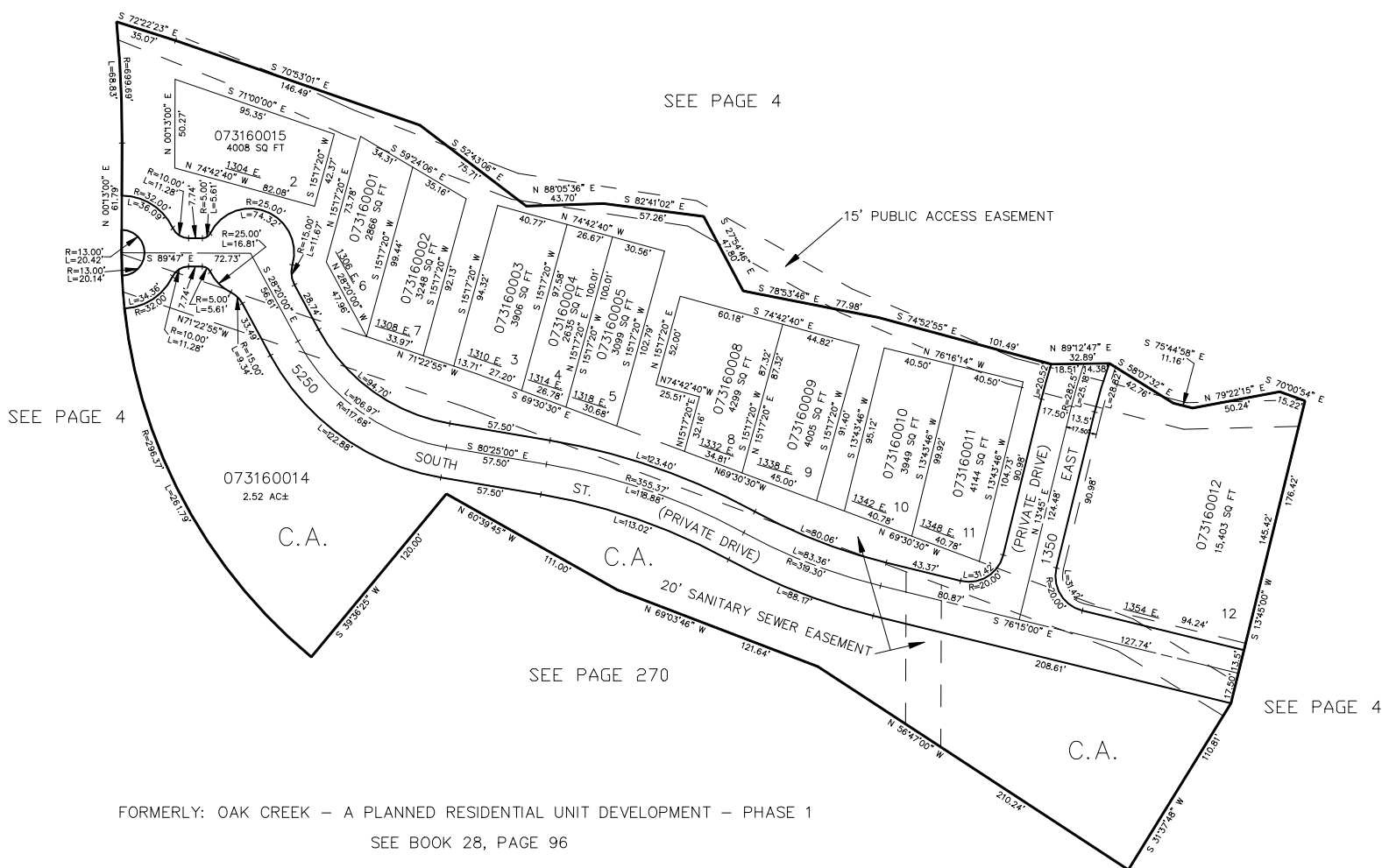


PART OF THE S.W. 1/4, SEC. 15, T.5N., R.1W., S.L.B. & M.  
 AN AMENDED SUBDIVISION OF  
**THE GARDENS AT OAK CREEK – PHASE 1**  
 A PLANNED RESIDENTIAL UNIT DEVELOPMENT, ALSO REVISION 2 LOT 12.

IN SOUTH OGDEN CITY

SCALE 1" = 50'

TAXING UNIT: 27



FOR COMPLETE ENG DATA SEE  
 ORIGINAL DEDICATION PLAT IN  
 BOOK 38, PAGE 43 OF RECORDS.  
 FOR COMPLETE ENG DATA OF  
 REVISION NO. 2 LOT 12 SEE  
 BOOK 40, PAGE 67 OF RECORDS.